

### CourseWork Web Site for Windows 10

The CourseWork Web site provides for a standard URL naming convention that gives a unique address for each student to host his/her course related material. The Web site is not authenticated or encrypted, meaning that anyone can view any material posted on the Web site. The site provides universal read and secured write. The site supports delivery of HTML Web documents and documents in native format. The benefit of using this method is that the delivery method is universal to all; i.e. through an internet browser. Internet browsers, Internet Explorer, Chrome, Firefox, or Safari handle things a little differently.

Depending on your preferences, you can put up an HTML page to introduce your documents or simply post the documents for listing and reading.

- The naming convention for the Web site is composed of three components:
- Server URL (<http://coursework.uhcl.edu>)
- Course Identifier (subject + catalog number + section), and
- Userid of the student. As an example, given a student whose Userid is “jonesr” and is a member of INST5635-01 the unique address for the student’s coursework site would be:

**<http://coursework.uhcl.edu/inst5635-01/jonesr>**

Typically, each Web site has a beginning or startup document that contains the necessary links to all other pages in the Web site. The Web server provides automatic startup of the Web site if a “Default.htm” document is present within the student’s directory. If the “Default.htm” document is not present, then the document name must be provided by the student to start the Web site. As an example, assume the student “jonesr” from INST5635-01 web site and has placed a “Default.htm” document in the coursework site. When the user enters in the address, <http://coursework.uhcl.edu/inst5635-01/jonesr> , the default document will automatically start. However, if the student calls the beginning document “myhome.htm,” the web site will not automatically start and the student will have to provide the following address to the users: <http://coursework.uhcl.edu/inst5635-01/jonesr/myhome.htm>

### FTP Server URL

Course site Web site: <http://coursework.uhcl.edu>

The master folder name for the course site is COURSEWORK. The COURSEWORK folder contains a sub-folder for each supported class. Each class folder contains a sub-directory for each student ENROLLED in the class.

### DISKSPACE

The student support web site provides each student with a total of 5 gigabytes disk space to post coursework-related material.

### REQUESTING ACCESS

Any faculty member teaching a class in which web-related assignments are required to complete the class may request creation of a coursework support site. The faculty member must place a formal request to the UCT Help Desk prior to the first day of class.

A folder will be created for each student ENROLLED in the class. Folders are created through an automated process each night.

### Software Information

At the time of this document's creation, the following was used:

Windows 10 version 1709

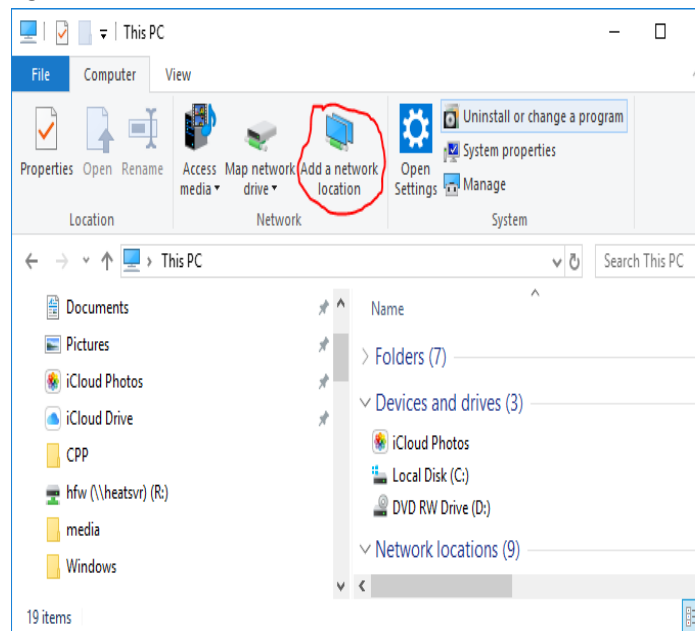
Microsoft Edge 41 web browser

\*Note - Although other applications, browser Add-ins and extensions could perform the same functions, these were the ones that were used and that functioned successfully at the time of the documentation was authored.

### ADDING DOCUMENTS TO THE WEBSITE

Windows 10 built-in client - Windows 10 Pro and Home have the FTP client enabled by default.

1. Open a File Explorer or Windows explorer window, click the "This PC" or "Computer". Select the "Add a network location" icon.
2. In the "Specify the location of your website" dialog, enter the address of the ftp



server ftp://coursework.uhcl.edu

Or use the full path to your directory.

Example:

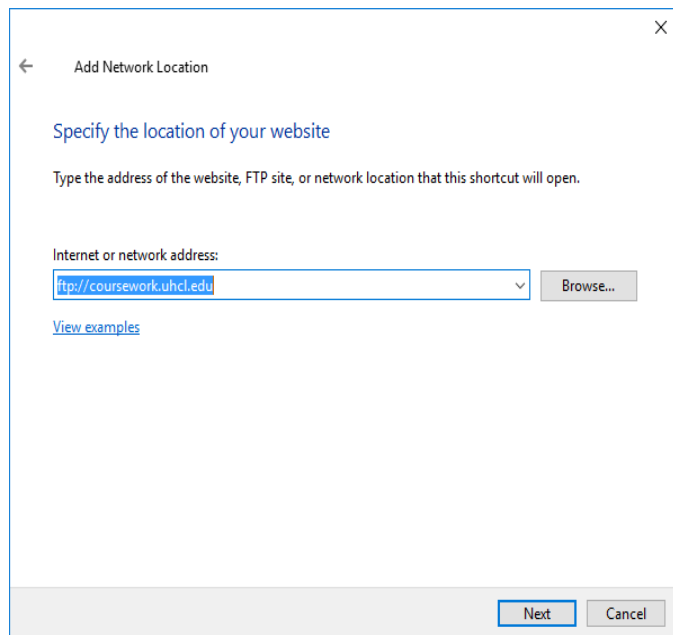
ftp://coursework.uhcl.edu/inst5635-01/jonesr

← Add Network Location

Where do you want to create this network location?



See the following screenshot

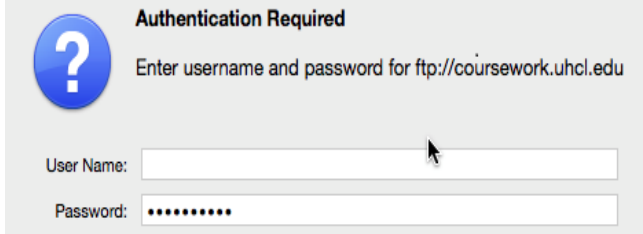
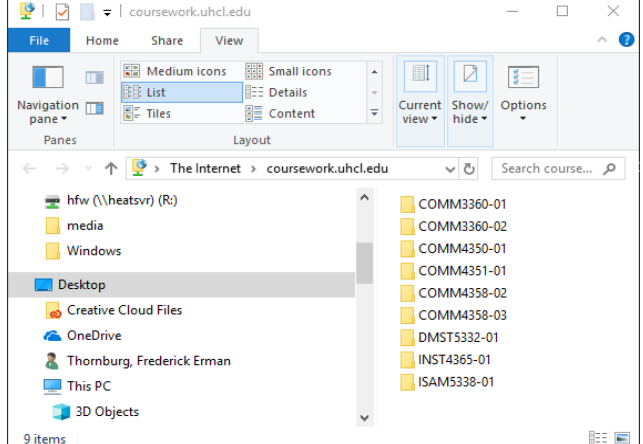


3. If you do have a username and password, enter your username here. The first time you connect to the FTP server, you'll be prompted to enter your password.

Log on anonymously

User name:

You will be prompted for your password when you connect to the FTP serv

<ol style="list-style-type: none"><li>4. You will be prompted for your UHCL log-in credentials. <i>This is the same UserID and password used for UHCL computer log-in, WebMail, and Blackboard.</i></li></ol>	
<ol style="list-style-type: none"><li>5. The File Explorer window will open showing the directories of courses.  Navigate to your course folder and then to your individual folder. (If you have not went directly to your individual folder in the URL address.)</li></ol>	

6. Open another separate File Explorer window and navigate to the file(s) you want to upload to your course work directory from your computer. Select the file(s) or folder.

Drag the selected items into your individual coursework directory. The selected file(s) or folder will be uploaded to your assigned directory in the coursework site, and will appear there (coursework directory).

*Created 07/20/2020*

*Revised 01/13/2023*