



Office of Institutional Effectiveness



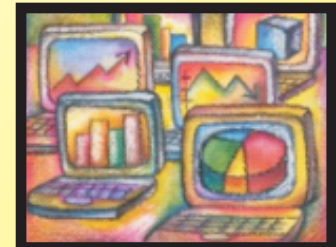
University
of Houston
Clear Lake

**Enrollment and Semester Credit Hours by School,
Classification and Rubric:**
Summer 2004 to Summer 2008

Published September 2008

Dr. Simone Tiu - Executive Director

Peggy Johnson - Associate Director
Miriam Qumsieh - Research Analyst II
Pablo Salinas - Research Analyst II
Mary Ballew - Research Analyst I





**University of Houston-Clear Lake
Office of Institutional Effectiveness**

Enrollment and Semester Credit Hours by School, Classification and Rubric - Summer 2004 to Summer 2008

Definitions: Undergrad - all undergraduate courses; Graduate - all graduate courses - by crse. Number

Enrolled - Total number of students enrolled in rubric for term - **totals will be duplicative**

Total SCH - Total number of Semester Credit Hours (enrollment * actual sch) - funded & non-funded

These data were derived using the certified CBM-004

course report to the state - data may differ to other

previously published reports.

| data sorted by rubric within school | | Summer 2004 | | Summer 2005 | | Summer 2006 | | Summer 2007 | | Summer 2008 | | Summer 2004 vs. Summer 2008 Percent Change | | Summer 2007 vs. Summer 2008 Percent Change | |
|-------------------------------------|--|--------------|--------------|--------------|--------------|--------------|--------------|--------------|--------------|--------------|--------------|--|-------------|--|-------------|
| | | Enrolled | Total SCH | Enrolled | Total SCH | Enrolled | Total SCH | Enrolled | Total SCH | Enrolled | Total SCH | Enrolled | Total SCH | Enrolled | Total SCH |
| Undergrad | School of Business | | | | | | | | | | | | | | |
| | ACCT Accounting | 209 | 627 | 247 | 741 | 251 | 753 | 224 | 672 | 238 | 714 | 13.9 | 13.9 | 6.3 | 6.3 |
| | BAPA Business and Public Administration | 1 | 1 | 6 | 14 | 6 | 14 | 3 | 7 | 7 | 15 | 600.0 | 1400.0 | 133.3 | 114.3 |
| | DSCI Decision Sciences | 170 | 510 | 111 | 333 | 126 | 378 | 123 | 369 | 154 | 462 | -9.4 | -9.4 | 25.2 | 25.2 |
| | ECON Economics | 39 | 117 | 65 | 195 | 51 | 153 | 45 | 135 | 66 | 198 | 69.2 | 69.2 | 46.7 | 46.7 |
| | ENVR Environmental Mgmt | 29 | 87 | 4 | 12 | 3 | 9 | 2 | 6 | 3 | 9 | -89.7 | -89.7 | 50.0 | 50.0 |
| | FINC Finance | 237 | 711 | 158 | 474 | 120 | 360 | 156 | 468 | 160 | 480 | -32.5 | -32.5 | 2.6 | 2.6 |
| | HADM Healthcare Admin. | 60 | 180 | 31 | 93 | 40 | 120 | 46 | 138 | 40 | 120 | -33.3 | -33.3 | -13.0 | -13.0 |
| | ISAM Information Systems Administration and Mgmt | 72 | 216 | 67 | 201 | 76 | 228 | 73 | 219 | 47 | 141 | -34.7 | -34.7 | -35.6 | -35.6 |
| | LEGL Legal Studies | 41 | 123 | 34 | 102 | 28 | 84 | 34 | 102 | 43 | 129 | 4.9 | 4.9 | 26.5 | 26.5 |
| | MGMT Management | 290 | 870 | 249 | 747 | 290 | 870 | 220 | 660 | 285 | 855 | -1.7 | -1.7 | 29.5 | 29.5 |
| | MKTG Marketing | 86 | 258 | 78 | 234 | 53 | 159 | 88 | 264 | 105 | 315 | 22.1 | 22.1 | 19.3 | 19.3 |
| POLS Political Science | 13 | 39 | 7 | 21 | 2 | 6 | 0 | 0 | 1 | 3 | -92.3 | -92.3 | n/a | n/a | |
| | Total | 1,247 | 3,739 | 1,057 | 3,167 | 1,046 | 3,134 | 1,014 | 3,040 | 1,149 | 3,441 | -7.9 | -8.0 | 13.3 | 13.2 |
| Graduate | ACCT Accounting | 111 | 333 | 64 | 192 | 110 | 330 | 100 | 300 | 117 | 351 | 5.4 | 5.4 | 17.0 | 17.0 |
| | BAPA Business and Public Administration | 47 | 137 | 50 | 144 | 41 | 121 | 41 | 105 | 61 | 157 | 29.8 | 14.6 | 48.8 | 49.5 |
| | DSCI Decision Sciences | 48 | 144 | 43 | 129 | 62 | 186 | 39 | 117 | 45 | 135 | -6.3 | -6.3 | 15.4 | 15.4 |
| | ECON Economics | 66 | 198 | 26 | 78 | 46 | 138 | 65 | 195 | 64 | 192 | -3.0 | -3.0 | -1.5 | -1.5 |
| | ENVR Environmental Mgmt | 8 | 24 | 0 | 0 | 3 | 9 | 9 | 27 | 4 | 12 | -50.0 | -50.0 | -55.6 | -55.6 |
| | FINC Finance | 90 | 270 | 88 | 264 | 99 | 297 | 99 | 297 | 169 | 507 | 87.8 | 87.8 | 70.7 | 70.7 |
| | HADM Healthcare Admin. | 68 | 204 | 108 | 324 | 71 | 213 | 124 | 352 | 150 | 450 | 120.6 | 120.6 | 21.0 | 27.8 |
| | HMRS Human Resource Mgmt | 27 | 81 | 9 | 27 | 9 | 27 | 13 | 39 | 43 | 129 | 59.3 | 59.3 | 230.8 | 230.8 |
| | ISAM Information Systems Administration and Mgmt | 61 | 183 | 29 | 87 | 46 | 138 | 32 | 96 | 57 | 171 | -6.6 | -6.6 | 78.1 | 78.1 |
| | LEGL Legal Studies | 0 | 0 | 0 | 0 | 22 | 66 | 28 | 84 | 33 | 99 | n/a | n/a | 17.9 | 17.9 |
| | MGMT Management | 87 | 261 | 118 | 354 | 153 | 459 | 188 | 564 | 182 | 546 | 109.2 | 109.2 | -3.2 | -3.2 |
| | MKTG Marketing | 77 | 231 | 91 | 273 | 62 | 186 | 62 | 186 | 54 | 162 | -29.9 | -29.9 | -12.9 | -12.9 |
| | Total | 690 | 2,066 | 626 | 1,872 | 724 | 2,170 | 800 | 2,362 | 979 | 2,911 | 41.9 | 40.9 | 22.4 | 23.2 |

Definitions: Undergrad - all undergraduate courses; Graduate - all graduate courses - by crse. Number
 Enrolled - Total number of students enrolled in rubric for term - **totals will be duplicative**
 Total SCH - Total number of Semester Credit Hours (enrollment * actual sch) - funded & non-funded

These data were derived using the certified CBM-004
 course report to the state - data may differ to other
 previously published reports.

| School of Business | | Summer 2004 | | Summer 2005 | | Summer 2006 | | Summer 2007 | | Summer 2008 | | Summer 2004 vs. Summer 2008 Percent Change | | Summer 2007 vs. Summer 2008 Percent Change | |
|--------------------|--|--------------|--------------|--------------|--------------|--------------|--------------|--------------|--------------|--------------|--------------|--|--------------|--|--------------|
| | | Enrolled | Total SCH | Enrolled | Total SCH | Enrolled | Total SCH | Enrolled | Total SCH | Enrolled | Total SCH | Enrolled | Total SCH | Enrolled | Total SCH |
| Total BUS | ACCT Accounting | 320 | 960 | 311 | 933 | 361 | 1,083 | 324 | 972 | 355 | 1,065 | 10.9 | 10.9 | 9.6 | 9.6 |
| | BAPA Business and Public Administration | 48 | 138 | 56 | 158 | 47 | 135 | 44 | 112 | 68 | 172 | 41.7 | 24.6 | 54.5 | 53.6 |
| | DSCI Decision Sciences | 218 | 654 | 154 | 462 | 188 | 564 | 162 | 486 | 199 | 597 | -8.7 | -8.7 | 22.8 | 22.8 |
| | ECON Economics | 105 | 315 | 91 | 273 | 97 | 291 | 110 | 330 | 130 | 390 | 23.8 | 23.8 | 18.2 | 18.2 |
| | ENVR Environmental Mgmt | 37 | 111 | 4 | 12 | 6 | 18 | 11 | 33 | 7 | 21 | -81.1 | -81.1 | -36.4 | -36.4 |
| | FINC Finance | 327 | 981 | 246 | 738 | 219 | 657 | 255 | 765 | 329 | 987 | 0.6 | 0.6 | 29.0 | 29.0 |
| | HADM Healthcare Admin. | 128 | 384 | 139 | 417 | 111 | 333 | 170 | 490 | 190 | 570 | 48.4 | 48.4 | 11.8 | 16.3 |
| | HMRS Human Resource Mgmt | 27 | 81 | 9 | 27 | 9 | 27 | 13 | 39 | 43 | 129 | 59.3 | 59.3 | 230.8 | 230.8 |
| | ISAM Information Systems Administration and Mgmt | 133 | 399 | 96 | 288 | 122 | 366 | 105 | 315 | 104 | 312 | -21.8 | -21.8 | -1.0 | -1.0 |
| | LEGL Legal Studies | 41 | 123 | 34 | 102 | 50 | 150 | 62 | 186 | 76 | 228 | 85.4 | 85.4 | 22.6 | 22.6 |
| | MGMT Management | 377 | 1,131 | 367 | 1,101 | 443 | 1,329 | 408 | 1,224 | 467 | 1,401 | 23.9 | 23.9 | 14.5 | 14.5 |
| | MKTG Marketing | 163 | 489 | 169 | 507 | 115 | 345 | 150 | 450 | 159 | 477 | -2.5 | -2.5 | 6.0 | 6.0 |
| | POLS Political Science | 13 | 39 | 7 | 21 | 2 | 6 | 0 | 0 | 1 | 3 | -92.3 | -92.3 | n/a | n/a |
| | Total | 1,937 | 5,805 | 1,683 | 5,039 | 1,770 | 5,304 | 1,814 | 5,402 | 2,128 | 6,352 | 9.9 | 9.4 | 17.3 | 17.6 |

Definitions: Undergrad - all undergraduate courses; Graduate - all graduate courses - by crse. Number Enrolled - Total number of students enrolled in rubric for term - **totals will be duplicative**
 Total SCH - Total number of Semester Credit Hours (enrollment * actual sch) - funded & non-funded

These data were derived using the certified CBM-004 course report to the state - data may differ to other previously published reports.

| data sorted by rubric within school | | Summer 2004 | | Summer 2005 | | Summer 2006 | | Summer 2007 | | Summer 2008 | | Summer 2004 vs. Summer 2008 Percent Change | | Summer 2007 vs. Summer 2008 Percent Change | |
|-------------------------------------|--|--------------|--------------|--------------|--------------|--------------|--------------|--------------|--------------|--------------|--------------|--|--------------|--|-------------|
| | | Enrolled | Total SCH | Enrolled | Total SCH | Enrolled | Total SCH | Enrolled | Total SCH | Enrolled | Total SCH | Enrolled | Total SCH | Enrolled | Total SCH |
| Undergrad | School of Human Sciences and Humanities | | | | | | | | | | | | | | |
| | ANTH Anthropology | 104 | 312 | 74 | 222 | 66 | 198 | 81 | 243 | 100 | 300 | -3.8 | -3.8 | 23.5 | 23.5 |
| | ARTS Arts | 188 | 564 | 211 | 633 | 212 | 634 | 168 | 504 | 184 | 552 | -2.1 | -2.1 | 9.5 | 9.5 |
| | COMM Communication | 185 | 555 | 206 | 618 | 27 | 81 | 49 | 147 | 92 | 276 | -50.3 | -50.3 | 87.8 | 87.8 |
| | CRIM Criminology | 74 | 222 | 45 | 135 | 73 | 219 | 77 | 231 | 75 | 225 | 1.4 | 1.4 | -2.6 | -2.6 |
| | FRAD Fire Services Admin. | 0 | 0 | 0 | 0 | 3 | 9 | 4 | 12 | 8 | 24 | n/a | n/a | 100.0 | 100.0 |
| | HIST History | 128 | 384 | 123 | 369 | 118 | 354 | 150 | 450 | 135 | 405 | 5.5 | 5.5 | -10.0 | -10.0 |
| | HLTH Health | 102 | 306 | 152 | 456 | 195 | 585 | 204 | 612 | 258 | 774 | 152.9 | 152.9 | 26.5 | 26.5 |
| | HUMN Humanities | 144 | 432 | 130 | 390 | 152 | 456 | 161 | 483 | 129 | 387 | -10.4 | -10.4 | -19.9 | -19.9 |
| | LITR Literature | 169 | 507 | 144 | 432 | 164 | 492 | 156 | 468 | 91 | 273 | -46.2 | -46.2 | -41.7 | -41.7 |
| | PHIL Philosophy | 21 | 63 | 24 | 72 | 12 | 36 | 27 | 81 | 20 | 60 | -4.8 | -4.8 | -25.9 | -25.9 |
| | PSYC Psychology | 355 | 1,065 | 306 | 916 | 360 | 1,080 | 379 | 1,137 | 393 | 1,179 | 10.7 | 10.7 | 3.7 | 3.7 |
| | SOCI Sociology | 163 | 489 | 151 | 453 | 115 | 345 | 151 | 453 | 170 | 510 | 4.3 | 4.3 | 12.6 | 12.6 |
| | SWRK Social Work | 9 | 27 | 10 | 30 | 6 | 18 | 9 | 27 | 20 | 60 | 122.2 | 122.2 | 122.2 | 122.2 |
| | WMST Womens Studies | 5 | 15 | 2 | 6 | 6 | 18 | 6 | 18 | 23 | 69 | 360.0 | 360.0 | 283.3 | 283.3 |
| WRIT Writing | 0 | 0 | 0 | 0 | 175 | 525 | 177 | 531 | 234 | 702 | n/a | n/a | 32.2 | 32.2 | |
| | Total | 1,647 | 4,941 | 1,578 | 4,732 | 1,684 | 5,050 | 1,799 | 5,397 | 1,932 | 5,796 | 17.3 | 17.3 | 7.4 | 7.4 |
| Graduate | ANTH Anthropology | 0 | 0 | 0 | 0 | 2 | 6 | 0 | 0 | 10 | 30 | n/a | n/a | n/a | n/a |
| | ARTS Arts | 16 | 48 | 15 | 45 | 11 | 33 | 12 | 34 | 15 | 45 | -6.3 | -6.3 | 25.0 | 32.4 |
| | COMM Communication | 2 | 6 | 3 | 9 | 3 | 9 | 13 | 39 | 4 | 12 | 100.0 | 100.0 | -69.2 | -69.2 |
| | CRCL Cross-Cultural Studies | 20 | 60 | 10 | 30 | 18 | 54 | 23 | 69 | 19 | 57 | -5.0 | -5.0 | -17.4 | -17.4 |
| | CRIM Criminology | 68 | 204 | 105 | 315 | 103 | 309 | 114 | 342 | 89 | 267 | 30.9 | 30.9 | -21.9 | -21.9 |
| | DMST Digital Media Studies | 0 | 0 | 0 | 0 | 0 | 0 | 0 | 0 | 13 | 39 | n/a | n/a | n/a | n/a |
| | FRAD Fire Services Admin. | 0 | 0 | 0 | 0 | 0 | 0 | 0 | 0 | 5 | 15 | n/a | n/a | n/a | n/a |
| | FUTR Studies of the Future | 20 | 60 | 4 | 12 | 6 | 18 | 6 | 18 | 0 | 0 | -100.0 | -100.0 | -100.0 | -100.0 |
| | HIST History | 76 | 228 | 48 | 144 | 51 | 153 | 46 | 138 | 34 | 102 | -55.3 | -55.3 | -26.1 | -26.1 |
| | HLTH Health | 17 | 51 | 12 | 36 | 14 | 42 | 42 | 126 | 26 | 78 | 52.9 | 52.9 | -38.1 | -38.1 |
| | HUMN Humanities | 16 | 48 | 12 | 36 | 11 | 33 | 14 | 42 | 26 | 78 | 62.5 | 62.5 | 85.7 | 85.7 |
| | LITR Literature | 95 | 285 | 69 | 207 | 86 | 258 | 78 | 234 | 77 | 231 | -18.9 | -18.9 | -1.3 | -1.3 |
| | PHIL Philosophy | 1 | 3 | 15 | 45 | 0 | 0 | 19 | 57 | 15 | 45 | 1400.0 | 1400.0 | -21.1 | -21.1 |
| | PSYC Psychology | 392 | 1,183 | 368 | 1,105 | 372 | 1,120 | 352 | 1,052 | 345 | 1,047 | -12.0 | -11.5 | -2.0 | -0.5 |
| | SOCI Sociology | 108 | 324 | 99 | 297 | 80 | 240 | 39 | 117 | 11 | 33 | -89.8 | -89.8 | -71.8 | -71.8 |
| WMST Womens Studies | 4 | 12 | 3 | 9 | 1 | 3 | 3 | 9 | 6 | 18 | 50.0 | 50.0 | 100.0 | 100.0 | |
| | Total | 835 | 2,512 | 763 | 2,290 | 758 | 2,278 | 761 | 2,277 | 695 | 2,097 | -16.8 | -16.5 | -8.7 | -7.9 |

Definitions: Undergrad - all undergraduate courses; Graduate - all graduate courses - by crse. Number
 Enrolled - Total number of students enrolled in rubric for term - **totals will be duplicative**
 Total SCH - Total number of Semester Credit Hours (enrollment * actual sch) - funded & non-funded

These data were derived using the certified CBM-004
 course report to the state - data may differ to other
 previously published reports.

| data sorted by rubric within school | | Summer 2004 | | Summer 2005 | | Summer 2006 | | Summer 2007 | | Summer 2008 | | Summer 2004 vs. Summer 2008 Percent Change | | Summer 2007 vs. Summer 2008 Percent Change | |
|-------------------------------------|--|--------------|--------------|--------------|--------------|--------------|--------------|--------------|--------------|--------------|------------|--|------------|--|-----------|
| | | Enrolled | Total SCH | Enrolled | Total SCH | Enrolled | Total SCH | Enrolled | Total SCH | Enrolled | Total SCH | Enrolled | Total SCH | Enrolled | Total SCH |
| Total HSH | School of Human Sciences and Humanities | | | | | | | | | | | | | | |
| | ANTH Anthropology | 104 | 312 | 74 | 222 | 68 | 204 | 81 | 243 | 110 | 330 | 5.8 | 5.8 | 35.8 | 35.8 |
| | ARTS Arts | 204 | 612 | 226 | 678 | 223 | 667 | 180 | 538 | 199 | 597 | -2.5 | -2.5 | 10.6 | 11.0 |
| | COMM Communication | 187 | 561 | 209 | 627 | 30 | 90 | 62 | 186 | 96 | 288 | -48.7 | -48.7 | 54.8 | 54.8 |
| | CRCL Cross-Cultural Studies | 20 | 60 | 10 | 30 | 18 | 54 | 23 | 69 | 19 | 57 | -5.0 | -5.0 | -17.4 | -17.4 |
| | CRIM Criminology | 142 | 426 | 150 | 450 | 176 | 528 | 191 | 573 | 164 | 492 | 15.5 | 15.5 | -14.1 | -14.1 |
| | DMST Digital Media Studies | 0 | 0 | 0 | 0 | 0 | 0 | 0 | 0 | 13 | 39 | n/a | n/a | n/a | n/a |
| | FRAD Fire Services Admin. | 0 | 0 | 0 | 0 | 3 | 9 | 4 | 12 | 13 | 39 | n/a | n/a | 225.0 | 225.0 |
| | FUTR Studies of the Future | 20 | 60 | 4 | 12 | 6 | 18 | 6 | 18 | 0 | 0 | -100.0 | -100.0 | -100.0 | -100.0 |
| | HIST History | 204 | 612 | 171 | 513 | 169 | 507 | 196 | 588 | 169 | 507 | -17.2 | -17.2 | -13.8 | -13.8 |
| | HLTH Health | 119 | 357 | 164 | 492 | 209 | 627 | 246 | 738 | 284 | 852 | 138.7 | 138.7 | 15.4 | 15.4 |
| | HUMN Humanities | 160 | 480 | 142 | 426 | 163 | 489 | 175 | 525 | 155 | 465 | -3.1 | -3.1 | -11.4 | -11.4 |
| | LITR Literature | 264 | 792 | 213 | 639 | 250 | 750 | 234 | 702 | 168 | 504 | -36.4 | -36.4 | -28.2 | -28.2 |
| | PHIL Philosophy | 22 | 66 | 39 | 117 | 12 | 36 | 46 | 138 | 35 | 105 | 59.1 | 59.1 | -23.9 | -23.9 |
| | PSYC Psychology | 747 | 2,248 | 674 | 2,021 | 732 | 2,200 | 731 | 2,189 | 738 | 2,226 | -1.2 | -1.0 | 1.0 | 1.7 |
| | SOCI Sociology | 271 | 813 | 250 | 750 | 195 | 585 | 190 | 570 | 181 | 543 | -33.2 | -33.2 | -4.7 | -4.7 |
| | SWRK Social Work | 9 | 27 | 10 | 30 | 6 | 18 | 9 | 27 | 20 | 60 | 122.2 | 122.2 | 122.2 | 122.2 |
| | WMST Womens Studies | 9 | 27 | 5 | 15 | 7 | 21 | 9 | 27 | 29 | 87 | 222.2 | 222.2 | 222.2 | 222.2 |
| | WRIT Writing | 0 | 0 | 0 | 0 | 175 | 525 | 177 | 531 | 234 | 702 | n/a | n/a | 32.2 | 32.2 |
| Total | 2,482 | 7,453 | 2,341 | 7,022 | 2,442 | 7,328 | 2,560 | 7,674 | 2,627 | 7,893 | 5.8 | 5.9 | 2.6 | 2.9 | |

Definitions: Undergrad - all undergraduate courses; Graduate - all graduate courses - by crse. Number
 Enrolled - Total number of students enrolled in rubric for term - **totals will be duplicative**
 Total SCH - Total number of Semester Credit Hours (enrollment * actual sch) - funded & non-funded

These data were derived using the certified CBM-004
 course report to the state - data may differ to other
 previously published reports.

| data sorted by rubric within school | | Summer 2004 | | Summer 2005 | | Summer 2006 | | Summer 2007 | | Summer 2008 | | Summer 2004 vs. Summer 2008 Percent Change | | Summer 2007 vs. Summer 2008 Percent Change | |
|-------------------------------------|---|--------------|------------|--------------|------------|--------------|------------|--------------|------------|--------------|--------------|--|-------------|--|-------------|
| | | Enrolled | Total SCH | Enrolled | Total SCH | Enrolled | Total SCH | Enrolled | Total SCH | Enrolled | Total SCH | Enrolled | Total SCH | Enrolled | Total SCH |
| Undergrad | School of Science and Computer Engineering | | | | | | | | | | | | | | |
| | ASTR Astronomy and Space | 87 | 261 | 86 | 258 | 55 | 165 | 56 | 168 | 37 | 111 | -57.5 | -57.5 | -33.9 | -33.9 |
| | BIOL Biology | 141 | 393 | 186 | 529 | 178 | 501 | 143 | 400 | 95 | 265 | -32.6 | -32.6 | -33.6 | -33.8 |
| | CENG Computer Engineering | 21 | 63 | 12 | 36 | 15 | 45 | 1 | 3 | 12 | 34 | -42.9 | -46.0 | 1100.0 | 1033.3 |
| | CHEM Chemistry | 26 | 78 | 25 | 75 | 47 | 141 | 52 | 156 | 53 | 159 | 103.8 | 103.8 | 1.9 | 1.9 |
| | CINF Computer Information | 0 | 0 | 0 | 0 | 0 | 0 | 9 | 27 | 14 | 42 | n/a | n/a | 55.6 | 55.6 |
| | CSCI Computer Science | 141 | 419 | 117 | 351 | 62 | 180 | 58 | 170 | 74 | 220 | -47.5 | -47.5 | 27.6 | 29.4 |
| | ENSC Environmental Science | 1 | 3 | 0 | 0 | 0 | 0 | 0 | 0 | 13 | 39 | 1200.0 | 1200.0 | n/a | n/a |
| | GEOL Geology | 49 | 147 | 87 | 261 | 124 | 372 | 109 | 327 | 52 | 156 | 6.1 | 6.1 | -52.3 | -52.3 |
| | INDH Industrial Hygiene and Safety | 14 | 42 | 11 | 33 | 11 | 33 | 13 | 39 | 19 | 57 | 35.7 | 35.7 | 46.2 | 46.2 |
| | MATH Mathematics | 155 | 465 | 114 | 342 | 121 | 363 | 116 | 348 | 131 | 393 | -15.5 | -15.5 | 12.9 | 12.9 |
| | PHYS Physics | 0 | 0 | 0 | 0 | 1 | 3 | 7 | 21 | 6 | 18 | n/a | n/a | -14.3 | -14.3 |
| | SWEN Software Engineering | 28 | 84 | 29 | 87 | 27 | 81 | 0 | 0 | 10 | 30 | -64.3 | -64.3 | n/a | n/a |
| Total | 663 | 1,955 | 667 | 1,972 | 641 | 1,884 | 564 | 1,659 | 516 | 1,524 | -22.2 | -22.0 | -8.5 | -8.1 | |
| Graduate | ASTR Astronomy and Space | 0 | 0 | 0 | 0 | 9 | 27 | 11 | 33 | 5 | 15 | n/a | n/a | -54.5 | -54.5 |
| | BIOL Biology | 25 | 71 | 40 | 114 | 38 | 114 | 35 | 105 | 48 | 144 | 92.0 | 102.8 | 37.1 | 37.1 |
| | BIOT Biotechnology | 0 | 0 | 0 | 0 | 0 | 0 | 0 | 0 | 13 | 37 | n/a | n/a | n/a | n/a |
| | CENG Computer Engineering | 27 | 81 | 2 | 6 | 2 | 6 | 4 | 12 | 13 | 27 | -51.9 | -66.7 | 225.0 | 125.0 |
| | CHEM Chemistry | 20 | 54 | 16 | 48 | 7 | 21 | 20 | 60 | 25 | 75 | 25.0 | 38.9 | 25.0 | 25.0 |
| | CINF Computer Information | 0 | 0 | 0 | 0 | 0 | 0 | 0 | 0 | 1 | 3 | n/a | n/a | n/a | n/a |
| | CSCI Computer Science | 93 | 253 | 101 | 271 | 102 | 282 | 78 | 232 | 116 | 330 | 24.7 | 30.4 | 48.7 | 42.2 |
| | ENSC Environmental Science | 17 | 51 | 12 | 36 | 18 | 54 | 14 | 42 | 11 | 33 | -35.3 | -35.3 | -21.4 | -21.4 |
| | GEOL Geology | 6 | 18 | 0 | 0 | 0 | 0 | 0 | 0 | 0 | 0 | -100.0 | -100.0 | n/a | n/a |
| | INDH Industrial Hygiene and Safety | 0 | 0 | 6 | 18 | 6 | 18 | 5 | 15 | 10 | 30 | n/a | n/a | 100.0 | 100.0 |
| | MATH Mathematics | 4 | 12 | 26 | 78 | 20 | 60 | 12 | 36 | 24 | 72 | 500.0 | 500.0 | 100.0 | 100.0 |
| | PHYS Physics | 17 | 51 | 13 | 39 | 1 | 3 | 8 | 24 | 17 | 51 | 0.0 | 0.0 | 112.5 | 112.5 |
| | SENG Systems Engineering | 25 | 75 | 21 | 63 | 24 | 72 | 24 | 72 | 25 | 75 | 0.0 | 0.0 | 4.2 | 4.2 |
| | STAT Statistics | 5 | 15 | 0 | 0 | 4 | 12 | 0 | 0 | 25 | 75 | 400.0 | 400.0 | n/a | n/a |
| | SWEN Software Engineering | 86 | 258 | 73 | 219 | 38 | 114 | 37 | 111 | 63 | 189 | -26.7 | -26.7 | 70.3 | 70.3 |
| | Total | 325 | 939 | 310 | 892 | 269 | 783 | 248 | 742 | 396 | 1,156 | 21.8 | 23.1 | 59.7 | 55.8 |

Definitions: Undergrad - all undergraduate courses; Graduate - all graduate courses - by crse. Number
 Enrolled - Total number of students enrolled in rubric for term - **totals will be duplicative**
 Total SCH - Total number of Semester Credit Hours (enrollment * actual sch) - funded & non-funded

These data were derived using the certified CBM-004
 course report to the state - data may differ to other
 previously published reports.

| data sorted by rubric within school | | Summer 2004 | | Summer 2005 | | Summer 2006 | | Summer 2007 | | Summer 2008 | | Summer 2004 vs. Summer 2008 Percent Change | | Summer 2007 vs. Summer 2008 Percent Change | |
|-------------------------------------|---|-------------|--------------|-------------|--------------|-------------|--------------|-------------|--------------|-------------|--------------|--|-------------|--|-------------|
| | | Enrolled | Total SCH | Enrolled | Total SCH | Enrolled | Total SCH | Enrolled | Total SCH | Enrolled | Total SCH | Enrolled | Total SCH | Enrolled | Total SCH |
| Total SCE | School of Science and Computer Engineering | | | | | | | | | | | | | | |
| | ASTR Astronomy and Space | 87 | 261 | 86 | 258 | 64 | 192 | 67 | 201 | 42 | 126 | -51.7 | -51.7 | -37.3 | -37.3 |
| | BIOL Biology | 166 | 464 | 226 | 643 | 216 | 615 | 178 | 505 | 143 | 409 | -13.9 | -11.9 | -19.7 | -19.0 |
| | BIOT Biotechnology | 0 | 0 | 0 | 0 | 0 | 0 | 0 | 0 | 13 | 37 | n/a | n/a | n/a | n/a |
| | CENG Computer Engineering | 48 | 144 | 14 | 42 | 17 | 51 | 5 | 15 | 25 | 61 | -47.9 | -57.6 | 400.0 | 306.7 |
| | CHEM Chemistry | 46 | 132 | 41 | 123 | 54 | 162 | 72 | 216 | 78 | 234 | 69.6 | 77.3 | 8.3 | 8.3 |
| | CINF Computer Information | 0 | 0 | 0 | 0 | 0 | 0 | 9 | 27 | 15 | 45 | n/a | n/a | 66.7 | 66.7 |
| | CSCI Computer Science | 234 | 672 | 218 | 622 | 164 | 462 | 136 | 402 | 190 | 550 | -18.8 | -18.2 | 39.7 | 36.8 |
| | ENSC Environmental Science | 18 | 54 | 12 | 36 | 18 | 54 | 14 | 42 | 24 | 72 | 33.3 | 33.3 | 71.4 | 71.4 |
| | GEOL Geology | 55 | 165 | 87 | 261 | 124 | 372 | 109 | 327 | 52 | 156 | -5.5 | -5.5 | -52.3 | -52.3 |
| | INDH Industrial Hygiene and Safety | 14 | 42 | 17 | 51 | 17 | 51 | 18 | 54 | 29 | 87 | 107.1 | 107.1 | 61.1 | 61.1 |
| | MATH Mathematics | 159 | 477 | 140 | 420 | 141 | 423 | 128 | 384 | 155 | 465 | -2.5 | -2.5 | 21.1 | 21.1 |
| | PHYS Physics | 17 | 51 | 13 | 39 | 2 | 6 | 15 | 45 | 23 | 69 | 35.3 | 35.3 | 53.3 | 53.3 |
| | SENG Systems Engineering | 25 | 75 | 21 | 63 | 24 | 72 | 24 | 72 | 25 | 75 | 0.0 | 0.0 | 4.2 | 4.2 |
| | STAT Statistics | 5 | 15 | 0 | 0 | 4 | 12 | 0 | 0 | 25 | 75 | 400.0 | 400.0 | n/a | n/a |
| | SWEN Software Engineering | 114 | 342 | 102 | 306 | 65 | 195 | 37 | 111 | 73 | 219 | -36.0 | -36.0 | 97.3 | 97.3 |
| | Total | 988 | 2,894 | 977 | 2,864 | 910 | 2,667 | 812 | 2,401 | 912 | 2,680 | -7.7 | -7.4 | 12.3 | 11.6 |

Definitions: Undergrad - all undergraduate courses; Graduate - all graduate courses - by crse. Number
 Enrolled - Total number of students enrolled in rubric for term - **totals will be duplicative**
 Total SCH - Total number of Semester Credit Hours (enrollment * actual sch) - funded & non-funded

These data were derived using the certified CBM-004
 course report to the state - data may differ to other
 previously published reports.

| data sorted by rubric within school | | Summer 2004 | | Summer 2005 | | Summer 2006 | | Summer 2007 | | Summer 2008 | | Summer 2004 vs. Summer 2008 Percent Change | | Summer 2007 vs. Summer 2008 Percent Change | |
|--|--|--------------|--------------|--------------|--------------|--------------|--------------|--------------|--------------|--------------|--------------|--|--------------|--|--------------|
| | | Enrolled | Total SCH | Enrolled | Total SCH | Enrolled | Total SCH | Enrolled | Total SCH | Enrolled | Total SCH | Enrolled | Total SCH | Enrolled | Total SCH |
| School of Education | | | | | | | | | | | | | | | |
| Undergrad | ECED Early Childhood Education | 75 | 225 | 86 | 258 | 67 | 201 | 75 | 225 | 63 | 189 | -16.0 | -16.0 | -16.0 | -16.0 |
| | EDUC Education | 124 | 372 | 119 | 357 | 128 | 384 | 146 | 438 | 179 | 537 | 44.4 | 44.4 | 22.6 | 22.6 |
| | GEOG Geography | 50 | 150 | 39 | 117 | 33 | 99 | 40 | 120 | 28 | 84 | -44.0 | -44.0 | -30.0 | -30.0 |
| | INST Instructional Technology | 190 | 570 | 90 | 270 | 33 | 99 | 45 | 135 | 32 | 96 | -83.2 | -83.2 | -28.9 | -28.9 |
| | LLLS Literacy, Language, and Library Science | 175 | 525 | 176 | 528 | 221 | 663 | 187 | 561 | 171 | 513 | -2.3 | -2.3 | -8.6 | -8.6 |
| | SILC Studies in Language and Culture | 55 | 165 | 64 | 192 | 58 | 174 | 59 | 177 | 72 | 216 | 30.9 | 30.9 | 22.0 | 22.0 |
| | SPED Special Education | 103 | 309 | 106 | 318 | 100 | 300 | 94 | 282 | 84 | 252 | -18.4 | -18.4 | -10.6 | -10.6 |
| | TCED Teacher Education | 140 | 254 | 183 | 323 | 216 | 458 | 313 | 745 | 251 | 571 | 79.3 | 124.8 | -19.8 | -23.4 |
| Total | | 912 | 2,570 | 863 | 2,363 | 856 | 2,378 | 959 | 2,683 | 880 | 2,458 | -3.5 | -4.4 | -8.2 | -8.4 |
| Graduate excluding Doctoral | ADSU Administration and Supervision | 658 | 1,918 | 658 | 1,974 | 634 | 1,822 | 625 | 1,875 | 531 | 1,593 | -19.3 | -16.9 | -15.0 | -15.0 |
| | COUN Counseling | 195 | 585 | 220 | 660 | 169 | 507 | 285 | 855 | 226 | 678 | 15.9 | 15.9 | -20.7 | -20.7 |
| | ECED Early Childhood Education | 42 | 126 | 80 | 240 | 71 | 213 | 55 | 165 | 69 | 207 | 64.3 | 64.3 | 25.5 | 25.5 |
| | EDUC Education | 167 | 501 | 158 | 474 | 191 | 573 | 173 | 519 | 225 | 675 | 34.7 | 34.7 | 30.1 | 30.1 |
| | GEOG Geography | 5 | 15 | 0 | 0 | 2 | 6 | 0 | 0 | 0 | 0 | -100.0 | -100.0 | n/a | n/a |
| | INST Instructional Technology | 395 | 1,185 | 215 | 645 | 285 | 853 | 221 | 663 | 214 | 642 | -45.8 | -45.8 | -3.2 | -3.2 |
| | LLLS Literacy, Language, and Library Science | 187 | 561 | 186 | 558 | 189 | 567 | 190 | 570 | 169 | 507 | -9.6 | -9.6 | -11.1 | -11.1 |
| | SILC Studies in Language and Culture | 181 | 543 | 172 | 516 | 144 | 432 | 113 | 339 | 104 | 312 | -42.5 | -42.5 | -8.0 | -8.0 |
| SPED Special Education | 28 | 84 | 29 | 87 | 21 | 63 | 13 | 39 | 4 | 12 | -85.7 | -85.7 | -69.2 | -69.2 | |
| TCED Teacher Education | 106 | 282 | 76 | 212 | 50 | 130 | 55 | 147 | 41 | 99 | -61.3 | -64.9 | -25.5 | -32.7 | |
| Total | | 1,964 | 5,800 | 1,794 | 5,366 | 1,756 | 5,166 | 1,730 | 5,172 | 1,583 | 4,725 | -19.4 | -18.5 | -8.5 | -8.6 |
| Doctoral | ADSU Administration and Supervision | 0 | 0 | 0 | 0 | 0 | 0 | 19 | 57 | 80 | 240 | n/a | n/a | 321.1 | 321.1 |
| | EDUC Education | 0 | 0 | 0 | 0 | 0 | 0 | 19 | 57 | 0 | 0 | n/a | n/a | -100.0 | -100.0 |
| | Total | 0 | 0 | 0 | 0 | 0 | 0 | 38 | 114 | 80 | 240 | n/a | n/a | 110.5 | 110.5 |

Definitions: Undergrad - all undergraduate courses; Graduate - all graduate courses - by crse. Number
 Enrolled - Total number of students enrolled in rubric for term - **totals will be duplicative**
 Total SCH - Total number of Semester Credit Hours (enrollment * actual sch) - funded & non-funded

These data were derived using the certified CBM-004 course report to the state - data may differ to other previously published reports.

| data sorted by rubric within school | | Summer 2004 | | Summer 2005 | | Summer 2006 | | Summer 2007 | | Summer 2008 | | Summer 2004 vs. Summer 2008 Percent Change | | Summer 2007 vs. Summer 2008 Percent Change | |
|-------------------------------------|--|--------------|---------------|--------------|---------------|--------------|---------------|--------------|---------------|--------------|---------------|--|-------------|--|------------|
| | | Enrolled | Total SCH | Enrolled | Total SCH | Enrolled | Total SCH | Enrolled | Total SCH | Enrolled | Total SCH | Enrolled | Total SCH | Enrolled | Total SCH |
| Total SOE | School of Education | | | | | | | | | | | | | | |
| | ADSD Administration and Supervision | 658 | 1,918 | 658 | 1,974 | 634 | 1,822 | 644 | 1,932 | 611 | 1,833 | -7.1 | -4.4 | -5.1 | -5.1 |
| | COUN Counseling | 195 | 585 | 220 | 660 | 169 | 507 | 285 | 855 | 226 | 678 | 15.9 | 15.9 | -20.7 | -20.7 |
| | ECED Early Childhood Education | 117 | 351 | 166 | 498 | 138 | 414 | 130 | 390 | 132 | 396 | 12.8 | 12.8 | 1.5 | 1.5 |
| | EDUC Education | 291 | 873 | 277 | 831 | 319 | 957 | 338 | 1,014 | 404 | 1,212 | 38.8 | 38.8 | 19.5 | 19.5 |
| | GEOG Geography | 55 | 165 | 39 | 117 | 35 | 105 | 40 | 120 | 28 | 84 | -49.1 | -49.1 | -30.0 | -30.0 |
| | INST Instructional Technology | 585 | 1,755 | 305 | 915 | 318 | 952 | 266 | 798 | 246 | 738 | -57.9 | -57.9 | -7.5 | -7.5 |
| | LLLS Literacy, Language, and Library Science | 362 | 1,086 | 362 | 1,086 | 410 | 1,230 | 377 | 1,131 | 340 | 1,020 | -6.1 | -6.1 | -9.8 | -9.8 |
| | SILC Studies in Language and Culture | 236 | 708 | 236 | 708 | 202 | 606 | 172 | 516 | 176 | 528 | -25.4 | -25.4 | 2.3 | 2.3 |
| | SPED Special Education | 131 | 393 | 135 | 405 | 121 | 363 | 107 | 321 | 88 | 264 | -32.8 | -32.8 | -17.8 | -17.8 |
| | TCED Teacher Education | 246 | 536 | 259 | 535 | 266 | 588 | 368 | 892 | 292 | 670 | 18.7 | 25.0 | -20.7 | -24.9 |
| Total | 2,876 | 8,370 | 2,657 | 7,729 | 2,612 | 7,544 | 2,727 | 7,969 | 2,543 | 7,423 | -11.6 | -11.3 | -6.7 | -6.9 | |
| Total UHCL SCH | | | 24,522 | | 22,654 | | 22,843 | | 23,446 | | 24,348 | | -0.7 | | 3.8 |