

# University of Houston Clear Lake

## Documentation for Configuration of Personal Laptops with Mac OS 10.3 or greater to PEAP Wireless

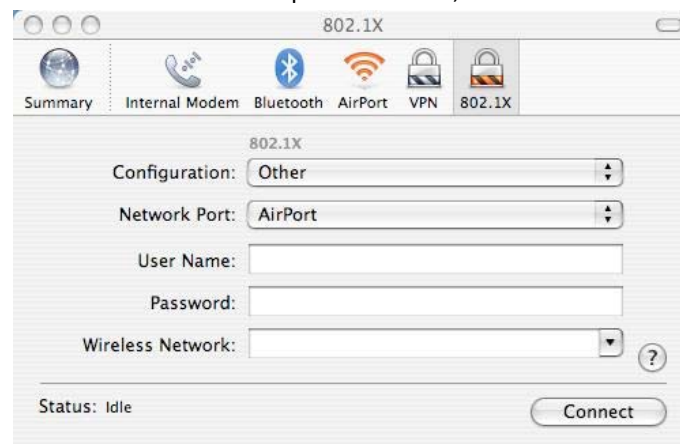
-This document contains procedures on connection a laptop with Mac OS 10.3 or greater to the UHCL PEAP Wireless Network. This document is for training, educational and informational purposes only.

\*\*\*Quotes are for informative purposes only and are not to be considered as part of the information you enter into fields.\*\*\*

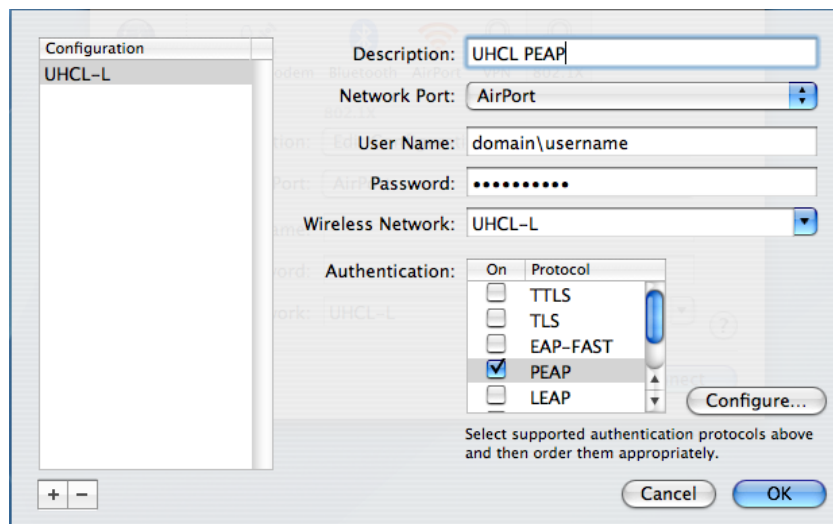
- 1) Open the Internet Connect program, which is found in the Applications folder.



- 2) Click on the **File** menu and select “**New 802.1x connection...**” If the new 802.1x connection option is grayed out and there is an 802.1x icon on the top of the screen, click that instead.



- 3) In the **Configuration:** field select **Edit Configurations...** This will open a new dialog box.
- 4) Click the + symbol from the bottom left to create a new entry, and fill in the dialog box as below. Ensure that **PEAP** is the only Authentication Protocol selected.
- 5) Enter the following information in the fields provided.
  - **Description:** UHCL PEAP
  - **Domain\Username**
    - o Username and Password are the same you use for UHCL E-mail and to log on to a computer here on campus.
    - o Your Logon Domain is:
      - “PCLAB” if you are a student
      - and
      - “UHCL” if you are faculty or staff
  - **Wireless Network:** UHCL-L



- 6) Click **OK**.
- 7) Click **Connect**.
- 8) When you are prompted to confirm the server certificate, click on **Show Certificate**.



9) Check the box to the left of “Always trust these certificates.”



10) Click **Continue**.

11) You should now connect to the wireless network within 1 minute.

#### Troubleshooting:

- If you receive any kind of port error, Please update your AirPort Software using the Software option under the Apple Menu.
- If you connect later and receive a message that states  
*“Mac OS X wants permission to use the ‘UHCL PEAP’ item from your keychain. Do you want to allow this?”*  
Click on Always Allow. This is the Wireless profile using your stored password and username to connect to the wireless network.