

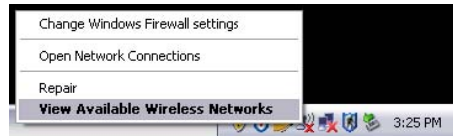
University of Houston Clear Lake

Documentation for Configuration of Personal Laptops with Windows XP to PEAP Wireless

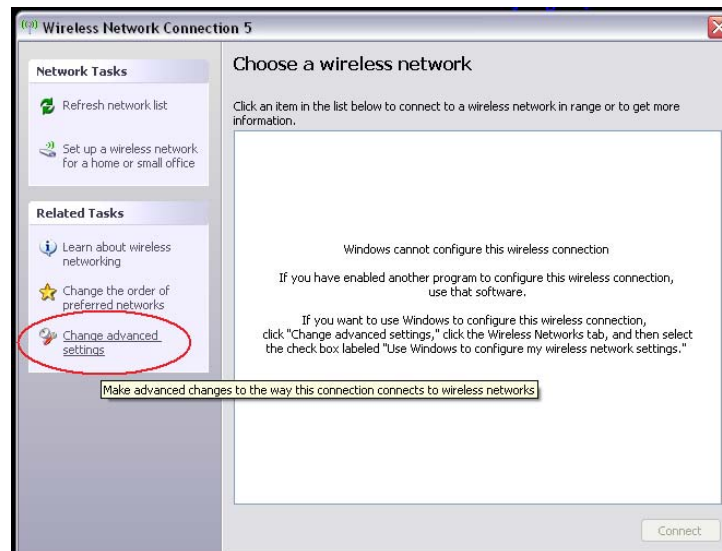
-This document contains procedures on connection a laptop with Windows XP to the UHCL PEAP Wireless Network. These procedures make use of the Windows integrated wireless configuration tool. This document is for training, educational and informational purposes only.

Quotes are for informative purposes only and are not to be considered as part of the information you enter into fields.

- 1) On the taskbar, right click on the windows wireless icon and left click on “View Available Wireless Networks.”

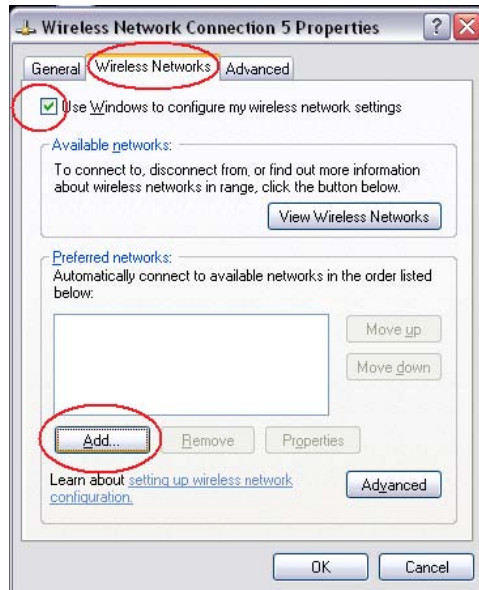


- 2) Click on “Change advanced settings”, found under “Related Tasks”.



3) Click on the “Wireless Networks” Tab. -Make sure that the box to the left of “Use Windows to configure my wireless network settings” is checked.

4) Click on the “Add...” button.

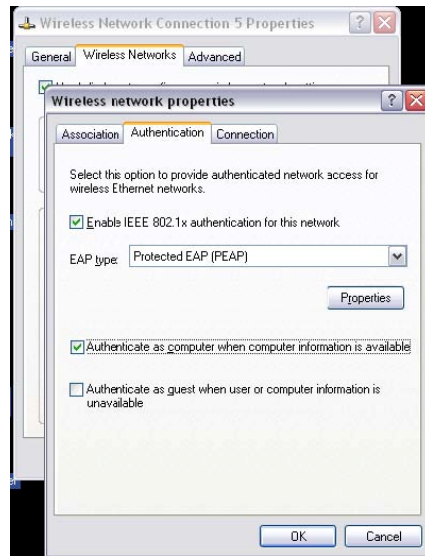


5) Enter “UHCL-L” in the space labeled “Network name (SSID)”.

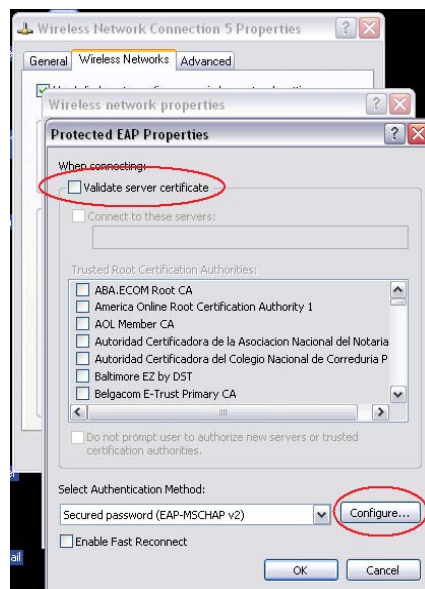
- Network Authentication = Open
- Data Encryption = WEP



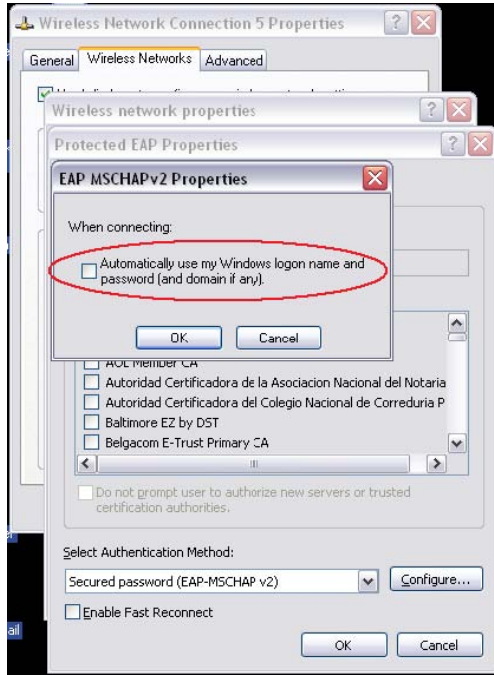
- 6) Click on the "Authentication" Tab.
 - Leave "Enable IEEE 802.1x authentication for this network" Checked.
 - Click the Pull-down Menu and select "Protected EAP (PEAP)" from the options.
 - Uncheck "Authenticate as computer when computer information is available"
 - Uncheck "Authenticate as guest when user or computer information is unavailable"
- 7) Click the "Properties" Button.



- 8) Uncheck the box to the left of "Validate server certificate".
- 9) Click the "Configure..." button.



10) Uncheck the box to the left of “Automatically use my Windows logon name and password (and domain if any).”



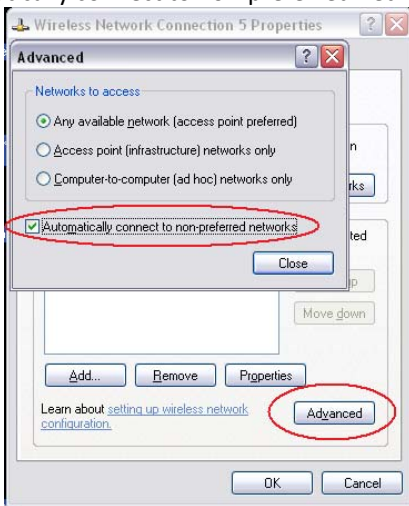
11) Click OK.

12) Click OK.

13) Click OK.

14) Click the “Advanced” Button.

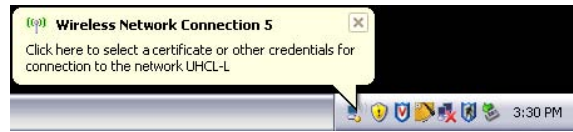
15) Check the box to the left of “Automatically connect to non-preferred networks”.



16) Click Close.

17) Click OK.

18) Wait for a pop-up in the bottom right corner of your screen that states “Click here to select a certificate or other credentials for connection to the network UHCL-L”. Click the pop-up.



19) Enter your Username, Password and Logon Domain.

-Your Username is the same you use for UHCL E-mail and to log o to a computer here on campus.

-Your Logon Domain is: “PCLAB” if you are a student and “UHCL” if you are faculty or staff



20) Click OK and wait up to 1 minute, depending on network traffic levels.